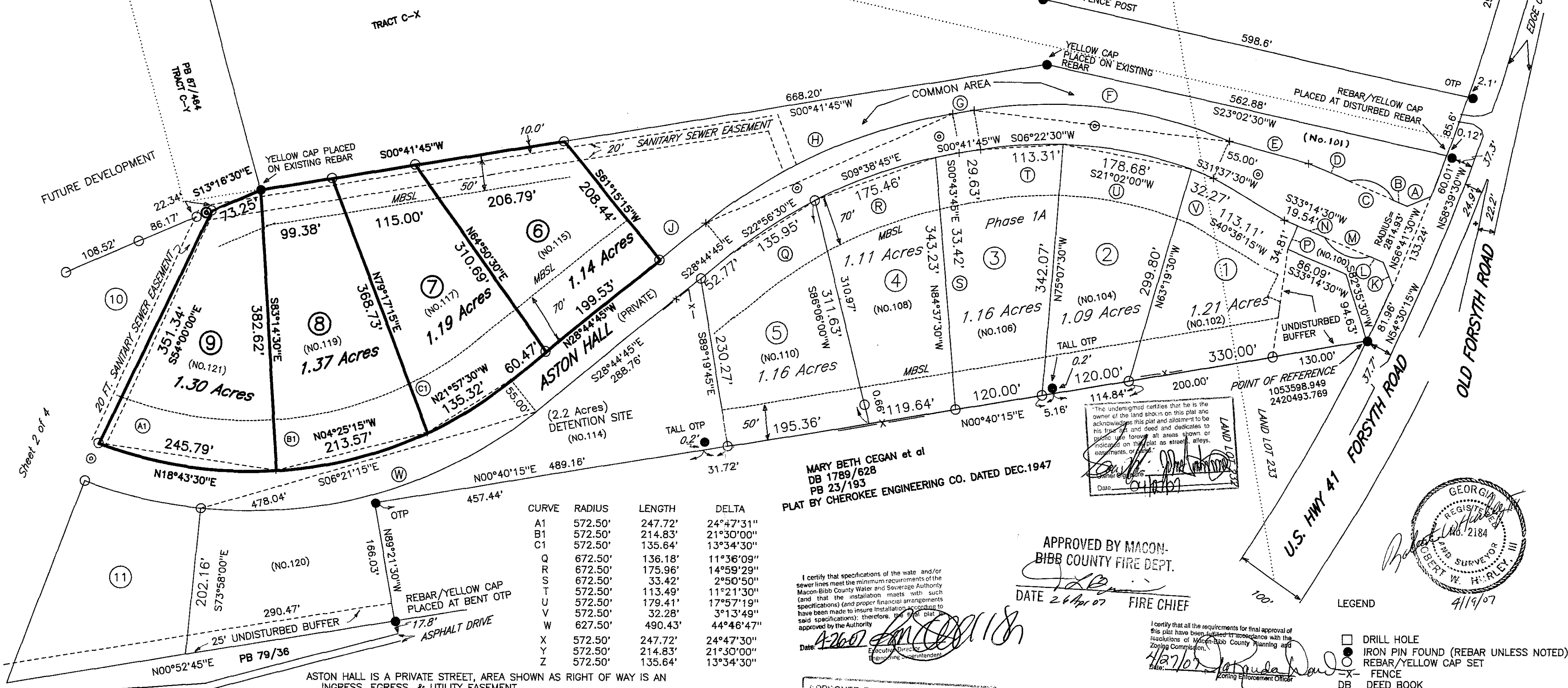
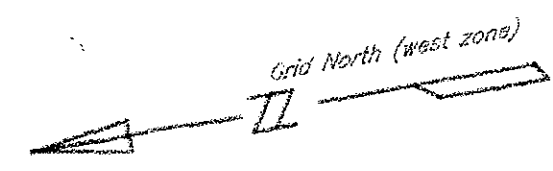


MINIMUM BUILDING SETBACK LINES
 FRONT = 70'
 REAR = 50'
 SIDE = 20'

Notice to potential lot purchasers:
 The following fees apply to each lot in this Subdivision and must be paid to the Macon Water Authority at the time of development:
 Water Main fee: \$675.00
 Sewer tap fee: \$500.00
 The above fees are subject to change at anytime by action of the Macon Water Authority

I certify that the final plat layout meets the platting requirements of the County of Bibb Engineering Dept. The County of Bibb does not by this approval accept the dedication, if any, of easements or servitudes and assumes no responsibility for their maintenance.
 4/26/07 *[Signature]*
 County Engineer



CURVE	RADIUS	LENGTH	DELTA
A1	572.50'	247.72'	24°47'31"
B1	572.50'	214.83'	21°30'00"
C1	572.50'	135.64'	13°34'30"
Q	672.50'	136.18'	11°36'09"
R	672.50'	175.96'	14°59'29"
S	672.50'	33.42'	2°50'50"
T	572.50'	113.49'	11°21'30"
U	572.50'	179.41'	17°57'19"
V	572.50'	32.28'	3°13'49"
W	627.50'	490.43'	44°46'47"
X	572.50'	247.72'	24°47'30"
Y	572.50'	214.83'	21°30'00"
Z	572.50'	135.64'	13°34'30"

MARY BETH CEGAN et al
 DB 1789/628
 PB 23/193
 PLAT BY CHEROKEE ENGINEERING CO. DATED DEC. 1947

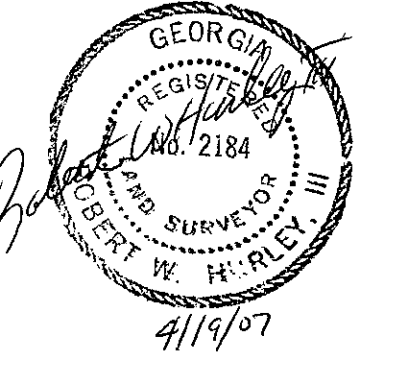
I certify that specifications of the water and/or sewer lines meet the minimum requirements of the Macon-Bibb County Water and Sewerage Authority (and that the installation meets with such specifications) and proper financial arrangements have been made to insure installation according to said specifications; therefore, the plat is approved by the Authority.
 Date: 4-26-07 *[Signature]*
 Executive Director

APPROVED BY MACON-BIBB COUNTY FIRE DEPT.
 DATE 2/26/07 FIRE CHIEF

Sanitary Sewer Easement Plat recorded in Plat Book 91, pages 922 & 923 Clerk of Superior Court of Bibb County GA.

APPROVED BY MACON-BIBB COUNTY DEPARTMENT OF HEALTH
 4/26/07 *[Signature]*
 Date Sanitary Engineer
 RESTRICTED TO PUBLIC SEWERS AND PUBLIC WATER SUPPLY.

Approved by the Macon-Bibb County Traffic Engineering Dept.
 4-26-07 *[Signature]*
 Date MBC Traffic Engineer or Designer
 Subject to GDOT's approval



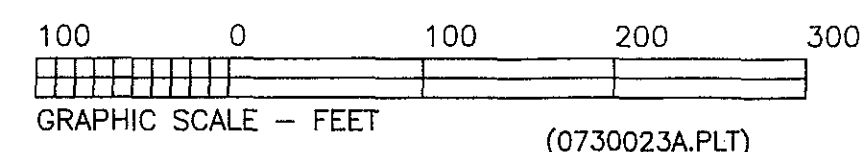
TRACT 1B
 NANCY S. KAPLAN
 DB 5724/301

COURSE	BEARING	DISTANCE
A	N11°16'45"W	35.00'
B	N33°14'25"E	20.00'
D	N33°14'25"E	60.10'
E	N25°52'30"E	113.11'
G	N00°41'45"E	29.63'
J	N28°44'45"W	81.52'
P	N57°51'15"W	34.81'
N	N33°14'30"E	40.56'
K	N78°08'02"E	35.00'
L	N33°14'25"E	20.00'

ASTON HALL IS A PRIVATE STREET, AREA SHOWN AS RIGHT OF WAY IS AN INGRESS, EGRESS, & UTILITY EASEMENT
 REMAINING AREA (PROPOSED LOTS, ROADS, & DETENTION) = 23.2 ACRES
 DISTANCES BY HORIZONTAL MEASUREMENT
 BEARINGS COMPUTED FROM TURNED ANGLES
 BEARINGS COMPUTED FROM AN OPUS OBSERVATION
 SUB SURFACE FEATURES AND UTILITIES ARE NOT SHOWN UNLESS NOTED
 REFERENCE PLAT RECORDED BIBB COUNTY SUPERIOR COURT PLAT BOOK 54 FOLIO 51
 APPARENT ANGULAR ERROR OF 0°00' 03 " PER ANGLE POINT
 APPARENT ERROR OF CLOSURE (FIELD) 1 FT. IN 10,000 FT.
 (PLAT) 1 FT. IN 411,888 FT.
 TOTAL STATION SURVEY ADJUSTED BY THE LEAST SQUARES METHOD
 PLAT PREPARED APRIL 19, 2007
 COPYRIGHT 2007 ROBERT W. HURLEY, III
 THIS SURVEY IS PREPARED FOR THE USE OF THE PERSON NAMED IN THE TITLE BLOCK. USE OF THIS PLAT BY OTHERS IS NOT AUTHORIZED AND IS AT THEIR OWN RISK.
 ALL EASEMENTS OF RECORD MAY NOT BE SHOWN
 TAX MAP NO. 14-200
 SANITARY SEWER EASEMENTS ARE 20" IN WIDTH AND ARE CENTERED ON THE MANHOLES UNLESS NOTED OTHERWISE
 SUBDIVISION DESIGN BY CARTER & SLOOPE ENGINEERS
 DEVELOPER - OLD FORSYTH PROPERTIES, L.L.C.
 6442 OLD FORSYTH ROAD
 MACON, GA. 31210

CURVE	RADIUS	LENGTH	DELTA	CHORD	CH.BEARING
C	53.50'	71.48'	76°33'00"	66.28'	N33°14'25"E
F	627.50'	356.42'	32°32'38"	351.65'	N16°58'06"E
H	727.50'	373.82'	29°26'28"	369.72'	N14°01'28"W
M	53.50'	71.48'	76°33'00"	66.28'	N33°14'25"E

Doc ID: 005043100001 Type: PLT
 Filed: 05/02/2007 at 02:14:00 PM
 Fee Amt: \$8.00 Page 1 of 1
 Bibb County Superior Court
 Dianne Brannen Clerk
 BK 92 Pg 409



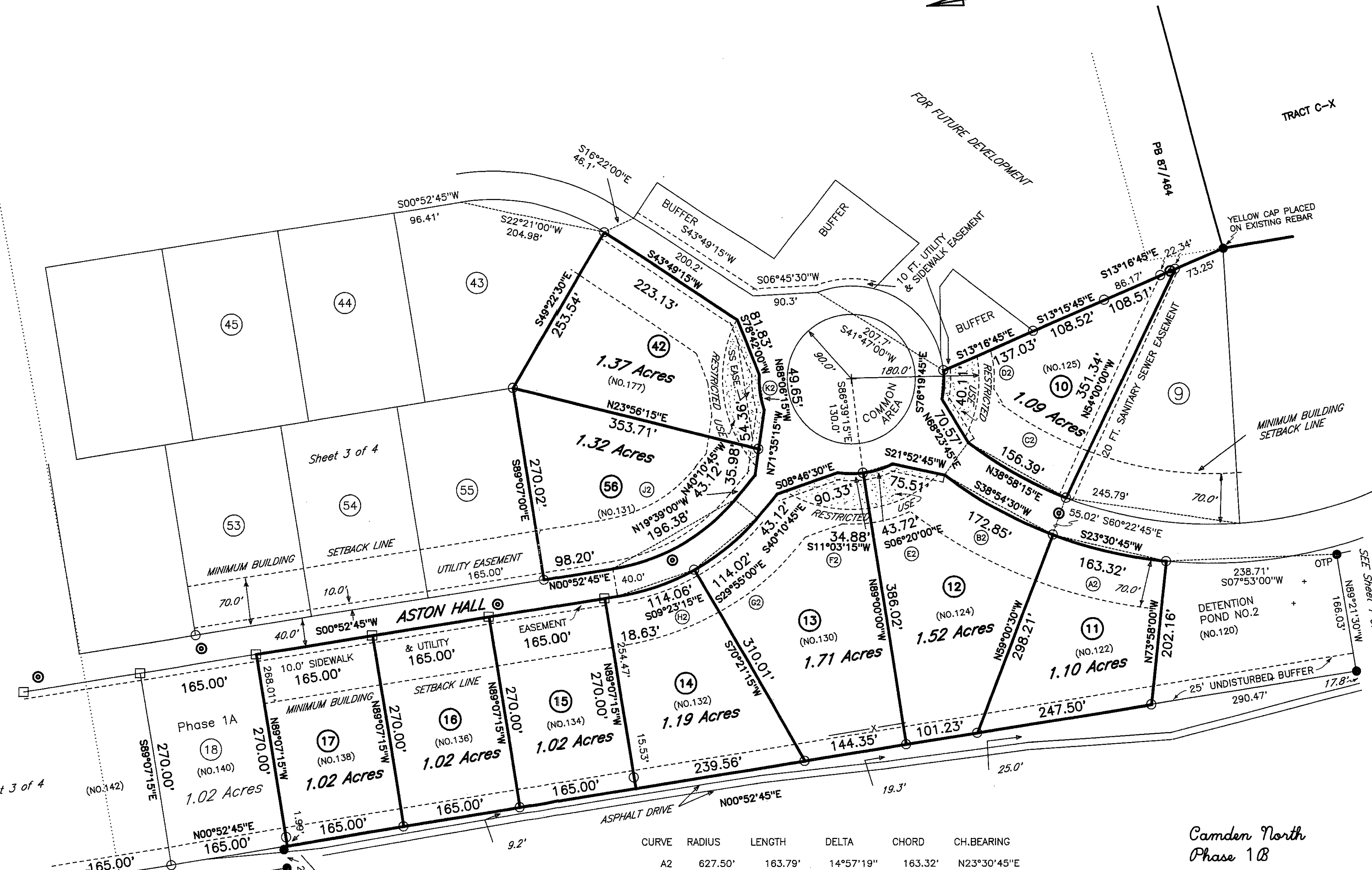
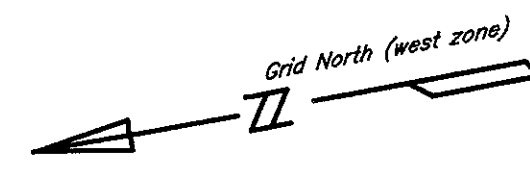
Sheet 1 of 4

SUBDIVISION 92/409

FOR
OLD FORSYTH PROPERTIES, LLC
 LAND LOTS 233 & 232
 THIRTEENTH LAND DISTRICT
 BIBB COUNTY GEORGIA
 Scale 1"=100' April 6, 2007

Robert W. Hurley, III
 GEORGIA REGISTERED LAND SURVEYOR No. 2184
 P.O. Box 28701, Macon, Georgia
 478-748-4395

06-9 07-30023



Sheet 3 of 4

Sheet 3 of 4

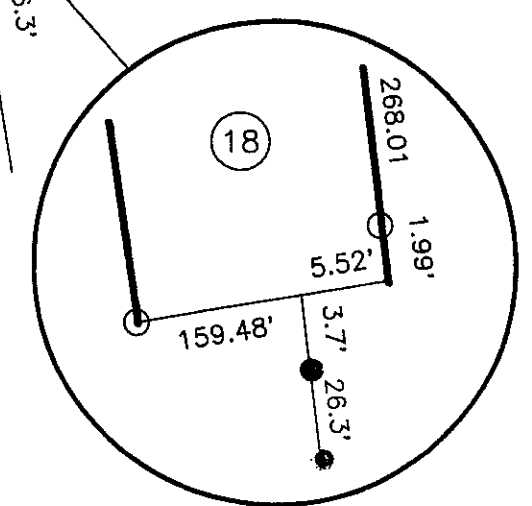
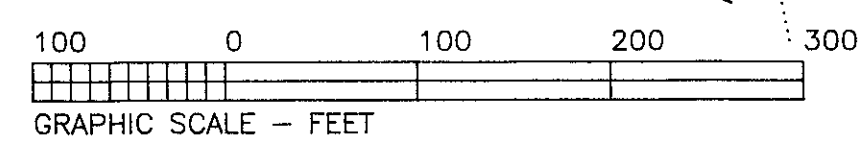
SEE SHEET 1 OF 4

CURVE	RADIUS	LENGTH	DELTA	CHORD	CH. BEARING
A2	627.50'	163.79'	14°57'19"	163.32'	N23°30'45"E
B2	627.50'	173.40'	15°49'57"	172.85'	
C2	572.50'	156.88'	15°42'04"	156.39'	
D2	130.00'	40.27'	17°44'49"	40.11'	
E2	130.00'	43.93'	19°21'44"	43.72'	
F2	130.00'	34.98'	15°25'04"	34.88'	
G2	320.00'	114.64'	20°31'31"	114.02'	
H2	320.00'	114.68'	20°31'58"	114.06'	
J2	280.00'	200.65'	41°03'29"	196.38'	
K2	130.00'	49.96'	22°01'04"	49.65'	

Camden North
Phase 1B

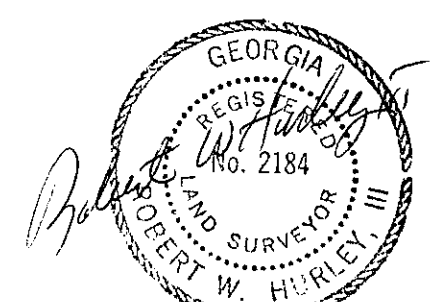
Sheet 2 of 4

(FOR NOTES & LEGEND SEE SHEET 1 OF 4)



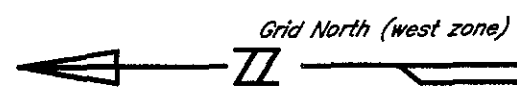
INSERT (NO SCALE)

TRACT 1B
NANCY S. KAPLAN
DB 5724/301
PB 79/36



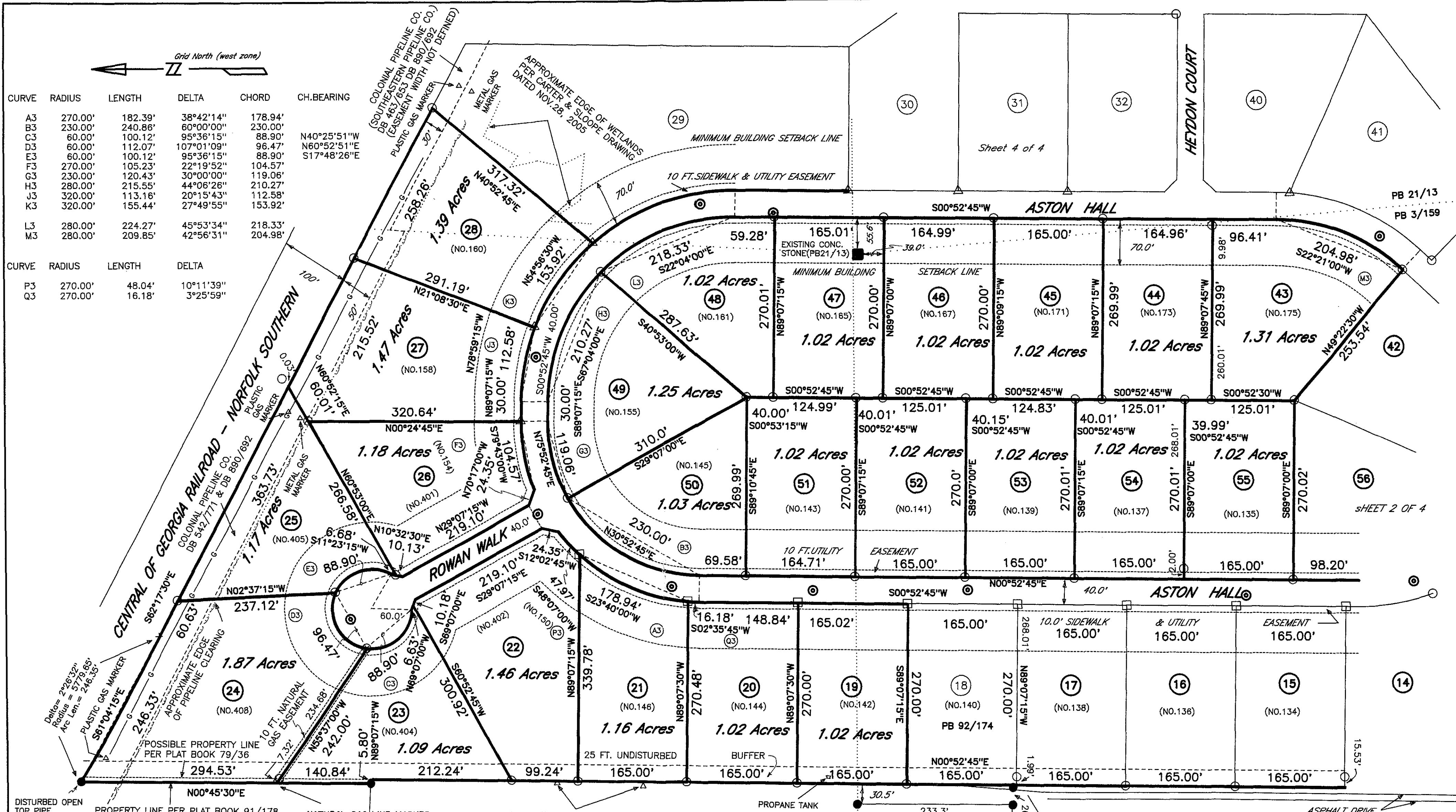
4/19/07

Doc ID: 00504310001 Type: PLT
Filed: 05/02/2007 at 02:14:00 PM
Fee Amt: \$8.00 Page 1 of 14:00 PM
Bibb County Superior Court
Dianne Brannen Clerk
BK 92 PG 410



CURVE	RADIUS	LENGTH	DELTA	CHORD	CH.BEARING
A3	270.00'	182.39'	38°42'14"	178.94'	
B3	230.00'	240.86'	60°00'00"	230.00'	
C3	60.00'	100.12'	95°36'15"	88.90'	N40°25'51"W
D3	60.00'	112.07'	107°01'09"	96.47'	N60°52'51"E
E3	60.00'	100.12'	95°36'15"	88.90'	S17°48'26"E
F3	270.00'	105.23'	22°19'52"	104.57'	
G3	230.00'	120.43'	30°00'00"	119.06'	
H3	280.00'	215.55'	44°06'26"	210.27'	
J3	320.00'	113.16'	20°15'43"	112.58'	
K3	320.00'	155.44'	27°49'55"	153.92'	
L3	280.00'	224.27'	45°53'34"	218.33'	
M3	280.00'	209.85'	42°56'31"	204.98'	

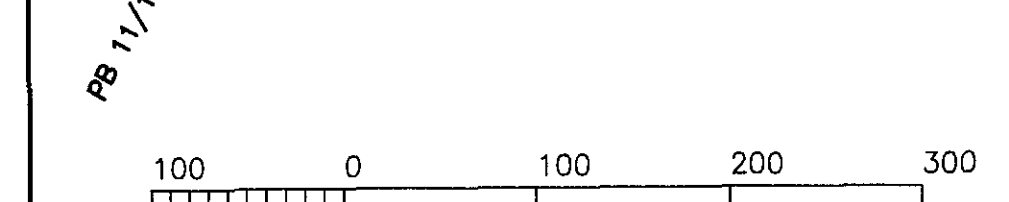
CURVE	RADIUS	LENGTH	DELTA
P3	270.00'	48.04'	10°11'39"
Q3	270.00'	16.18'	3°25'59"



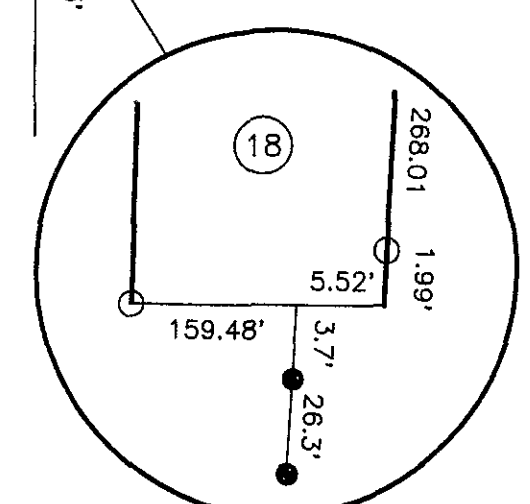
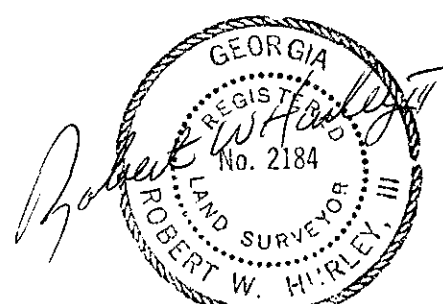
BOB LEE, INC.
DB 6152/194
PB 21/178

SIDNEY H. HOLCOMB
DB 6586/167
PB 79/36
PB 87/302

TRACT IB
NANCY S. KAPLAN
DB 5724/301
PB 79/36



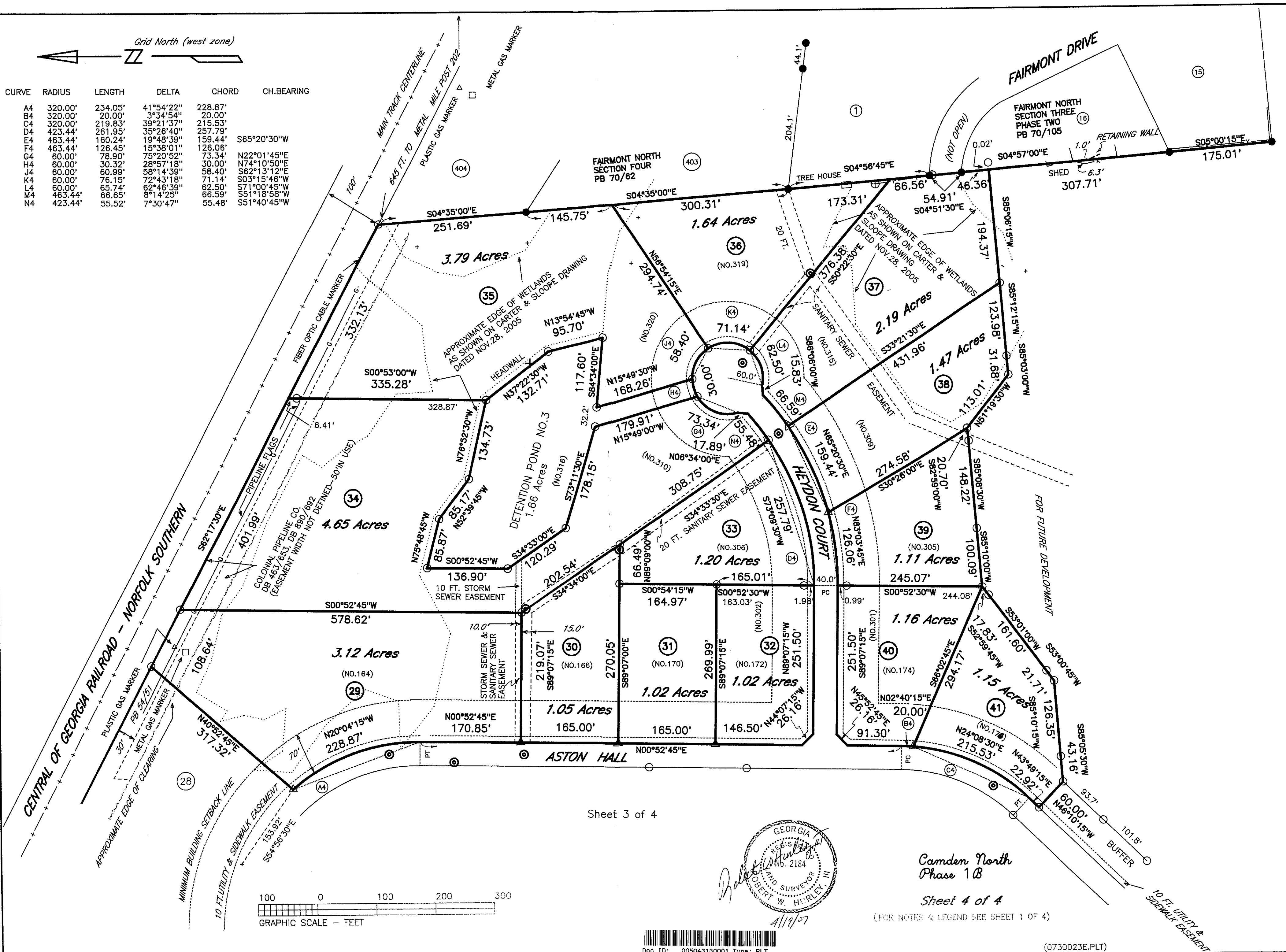
PG 11/190



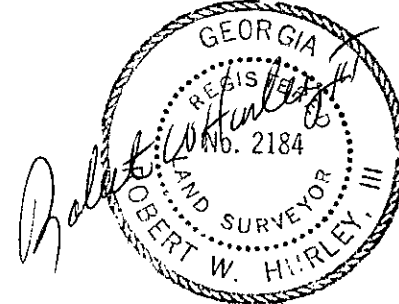
Camden North
Phase 1B
Sheet 3 of 4
(FOR NOTES AND LEGEND SEE SHEET 1 of 4)

Grid North (west zone)

CURVE	RADIUS	LENGTH	DELTA	CHORD	CH.BEARING
A4	320.00'	234.05'	41°54'22"	228.87'	
B4	320.00'	20.00'	3°34'54"	20.00'	
C4	320.00'	219.83'	39°21'37"	215.53'	
D4	423.44'	261.95'	35°26'40"	257.79'	
E4	463.44'	180.24'	19°48'39"	159.44'	S65°20'30"W
F4	463.44'	126.45'	15°38'01"	126.06'	
G4	60.00'	78.90'	75°20'52"	73.34'	N22°01'45"E
H4	60.00'	30.32'	28°57'18"	30.00'	N74°10'50"E
J4	60.00'	60.99'	58°14'39"	58.40'	S62°13'12"E
K4	60.00'	76.15'	72°43'18"	71.14'	S03°15'46"W
L4	60.00'	65.74'	62°46'39"	62.50'	S71°00'45"W
M4	463.44'	66.65'	8°14'25"	66.59'	S51°18'58"W
N4	423.44'	55.52'	7°30'47"	55.48'	S51°40'45"W



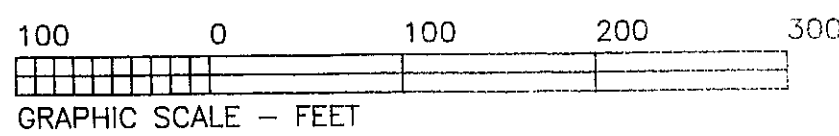
Sheet 3 of 4



Camden North Phase 1B

Sheet 4 of 4

(FOR NOTES & LEGEND SEE SHEET 1 OF 4)



Doc ID: 005043130001 Type: PLT
 Filed: 05/02/2007 at 02:14:00 PM
 Fee Amt: \$6.00 Page 1 of 1
 Bibb County Superior Court
 Dianne Brannen Clerk
 BK 92 PG 412

(0730023E.PLT)