

MARY JOYCE I
375

N/F EVELYN HAM STUART
±64.95 ACRES

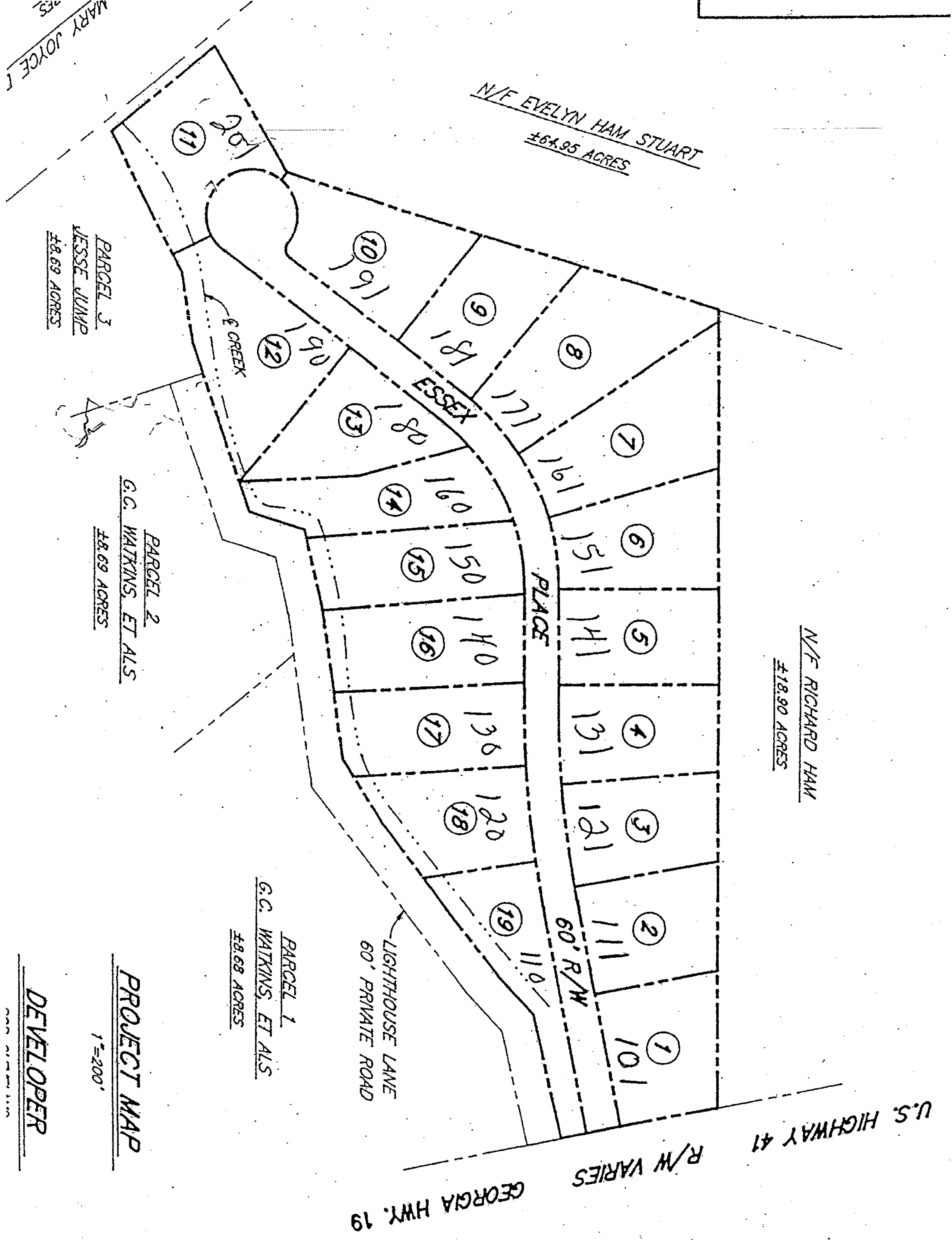
PARCEL 3
JESSE JUMP
±8.69 ACRES

PARCEL 2
G.C. WATKINS, ET ALS
±8.69 ACRES

PARCEL 1
G.C. WATKINS, ET ALS
±8.68 ACRES

N/F RICHARD HAM
±18.90 ACRES

PROJECT MAP
1"=200'
DEVELOPER



U.S. HIGHWAY 41
R/W VARIES
GEORGIA HWY. 19