

NOTES

- CONTRACTOR WILL CHECK AND VERIFY ALL DIMENSIONS AND CONDITIONS BEFORE STARTING CONSTRUCTION.
- CONTRACTOR WILL BE RESPONSIBLE FOR THE PERFORMANCE OF ALL MATERIALS AND EQUIPMENT INSTALLED.
- ALL TRADES WILL CONFORM WITH ALL FEDERAL, STATE, AND LOCAL LAWS, CODES, RULES, AND REGULATIONS.
- CONFIRM WITH OWNER ALL ITEMS NOT SHOWN ON PLANS.
- REMOVE FROM JOB SITE ALL CONSTRUCTION DEBRIS AT COMPLETION OF PROJECT.
- SLOPE FINISH GRADES AWAY FROM STRUCTURE WITH NO PONDING.
- TREAT SOIL IN AND AROUND STRUCTURE FOR TERMITES.
- PROVIDE 1/4" x 1/4" PLYWOOD FLOOR DECKING BOTH FLOORS (GLUED & SCREWED).
- BATT INSULATION: 5/8" EXTERIOR WALLS
4" BETWEEN MAIN FLOOR JOISTS AND 2X6 WALLS
9" ATTIC SPACES

DOORS

- 12'-0" x 21'-0" OVERHEAD W/ LITES (1)
- 3'-0" x 8'-0" x 1 1/4" DECORATIVE EXTERIOR (1)
- 3'-0" x 8'-0" x 1 1/4" EXTERIOR (1)
- 12'-0" x 8'-0" HORIZ. SLIDING EXTERIOR W/ FOLL. GLASS (1)
- 3'-6" x 8'-0" CASSED OPENING (1)
- 2'-0" x 8'-0" x 1 1/4" INTERIOR (4)
- 4'-0" x 8'-0" CASSED OPENING (1)
- 1'-6" x 8'-0" x 1 1/4" INTERIOR (1)
- 2'-0" x 8'-0" x 1 1/4" INTERIOR (5)
- 3'-0" x 8'-0" x 1 1/4" INTERIOR (3)
- 2'-4" x 8'-0" x 1 1/4" INTERIOR (3)
- 3'-0" x 8'-0" x 1 1/4" INTERIOR BROWN STILE (1)
- 2'-0" x 8'-0" x 1 1/4" INTERIOR (1)
- 3'-0" x 6'-0" x 1 1/4" EXTERIOR (1)
- 2'-0" x 4'-0" x 1 1/4" INTERIOR (3)

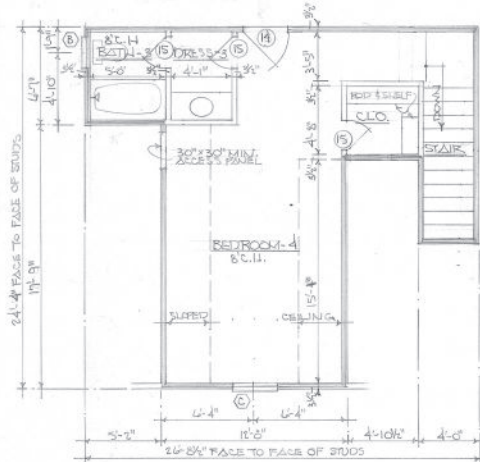
WINDOWS

- (2) 32" x 72" SINGLE HUNG (3)
- 24" x 40" SINGLE HUNG (3)
- 32" x 46" SINGLE HUNG (4)
- 52" x 72" SINGLE HUNG (2)
- 24" x 54" SINGLE HUNG (2)
- 48" x 14" AWNING (2)

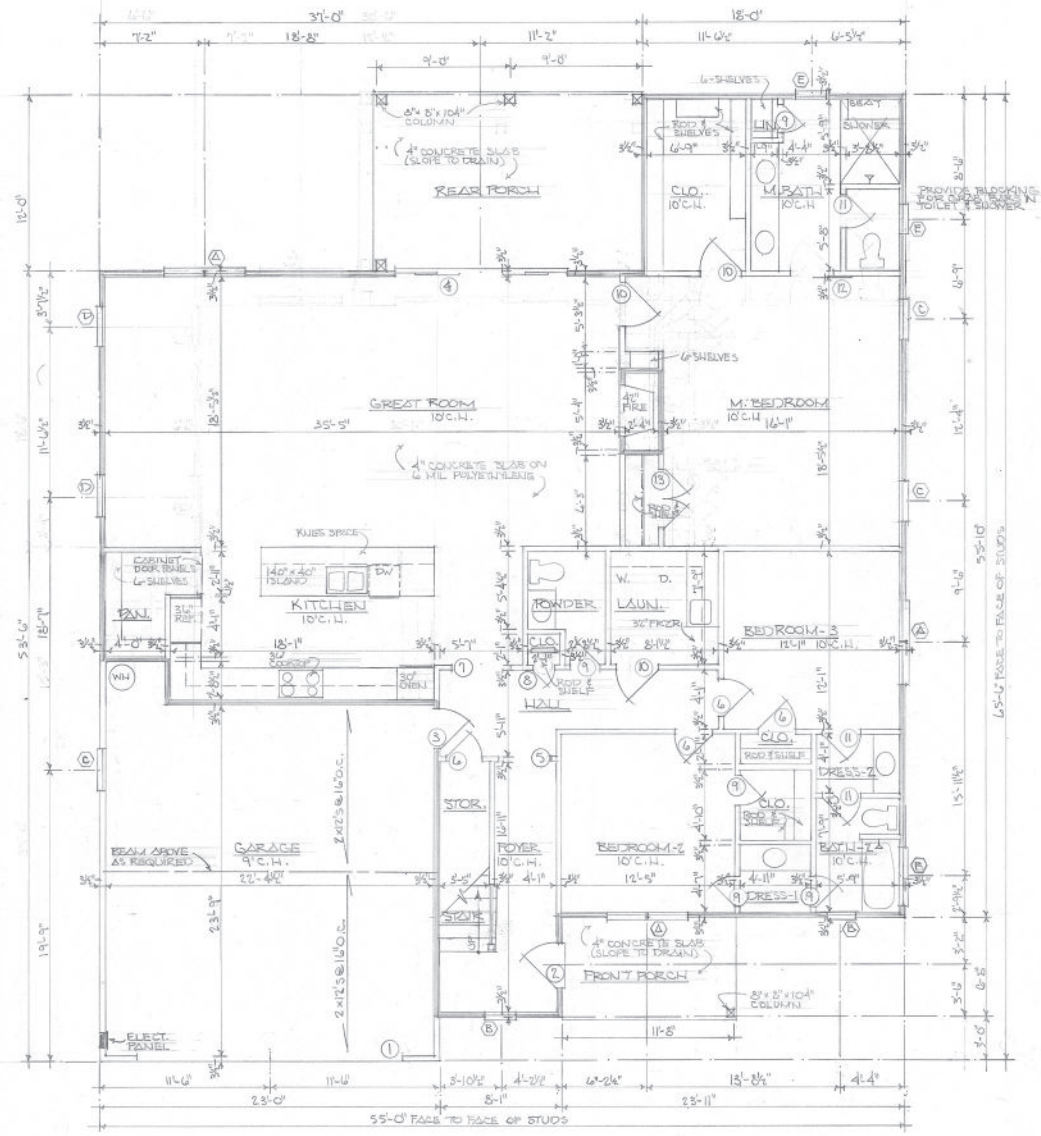
VERIFY ACTUAL ROUGH OPENING AND WINDOW SIZES WITH THE MANUFACTURER.

AREA TABULATIONS

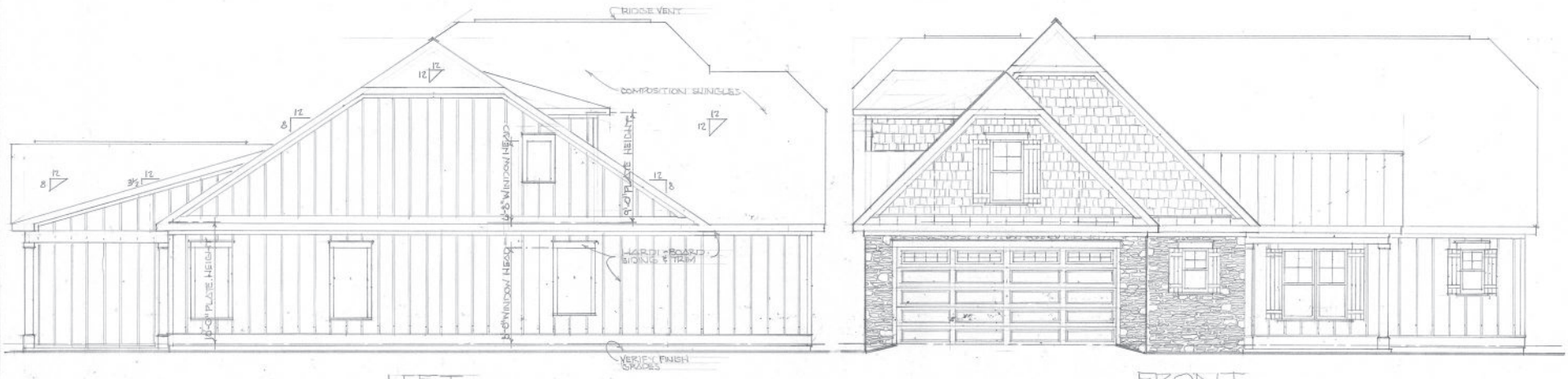
HEATED	MAIN FLOOR	2323 SQ. FT.
	UPPER FLOOR	376 SQ. FT.
UNHEATED	GARAGE	561 SQ. FT.
	FRONT PORCH	73 SQ. FT.
	REAR PORCH	216 SQ. FT.



FLOOR PLANS

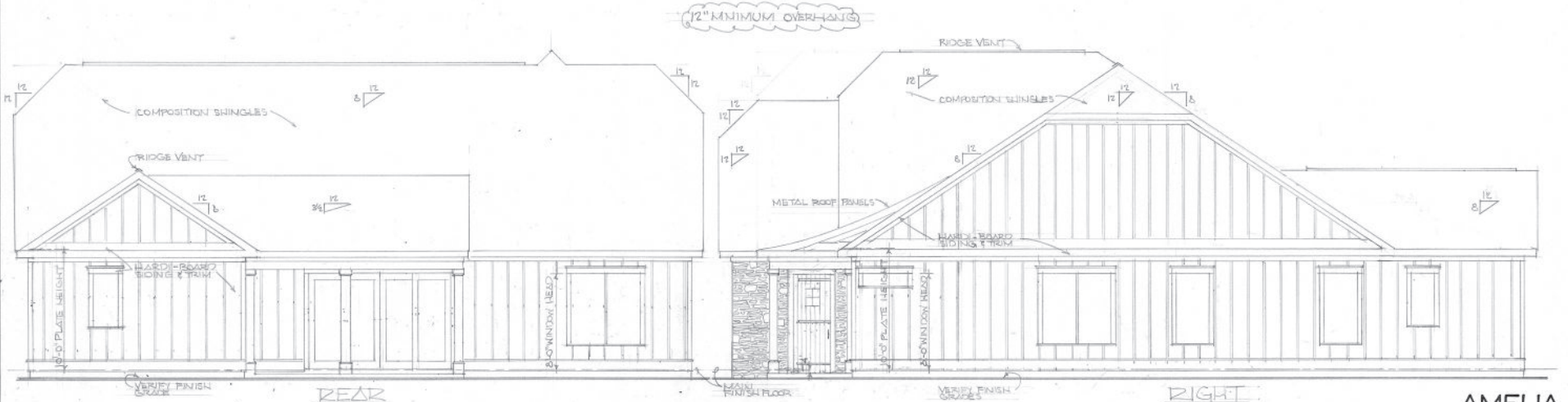


1/4" = 1'-0"



LEFT

FRONT



REAR

RIGHT

EXTERIOR ELEVATIONS 1/4"=1'-0"

AMELIA