

EXTERIOR ELEVATIONS 1/4" = 1'-0"

1/2" MINIMUM OVERHANG

NOTES

- CONTRACTOR WILL CHECK AND VERIFY ALL DIMENSIONS AND CONDITIONS BEFORE STARTING CONSTRUCTION.
- CONTRACTOR WILL BE RESPONSIBLE FOR THE PERFORMANCE OF ALL MATERIALS AND EQUIPMENT INSTALLED.
- ALL TRADES WILL CONFORM WITH ALL FEDERAL, STATE, AND LOCAL LAWS, CODES, RULES, AND REGULATIONS.
- CONFIRM WITH OWNER ALL ITEMS NOT SHOWN ON PLANS.
- REMOVE FROM JOB SITE ALL CONSTRUCTION DEBRIS AT COMPLETION OF PROJECT.
- SLOPE FINISH GRADES AWAY FROM STRUCTURE WITH NO PONDING.
- TREAT SOIL IN AND AROUND STRUCTURE FOR TERMITES.
- PROVIDE 3/4" T & G PLYWOOD FLOOR DECKING BOTH FLOORS (GLUED & SCREWED).
- BATT INSULATION: 3/8" EXTERIOR WALLS
6" BETWEEN MAIN FLOOR JOISTS AND 2X WALLS
9" ATTIC SPACES

DOORS

- 1'-0" x 8'-0" OVERHEAD W/ LITES (2)
- 3'-0" x 8'-0" DECORATIVE EXTERIOR (1)
- 3'-0" x 8'-0" x 1/4" EXTERIOR (1)
- 1'-0" x 8'-0" HORIZ. SLIDING EXTERIOR W/ FULL GLASS (1)
- 2'-0" x 8'-0" x 1/4" INTERIOR (8)
- 3'-0" x 8'-0" x 1/4" INTERIOR (3)
- 2'-4" x 8'-0" x 1/4" INTERIOR (2)
- 1'-6" x 8'-0" x 1/4" INTERIOR (2)
- 2'-0" x 8'-0" x 1/4" INTERIOR (2)
- 2'-0" x 6'-8" x 1/4" INTERIOR (2)
- 3'-0" x 6'-8" x 1/4" EXTERIOR (1)

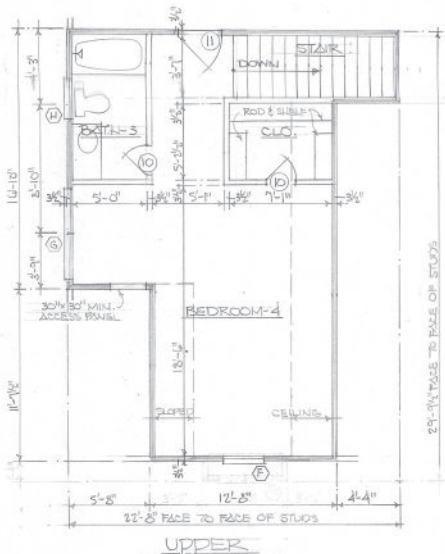
WINDOWS

- 20" x 24" CASEMENTS W/ 4" MULLIONS (1)
- 32" x 12" SINGLE HUNG (3)
- 32" x 60" SINGLE HUNG (1)
- 24" x 54" SINGLE HUNG (3)
- 48" x 14" FIXED SASH (1)
- 32" x 66" SINGLE HUNG (1)
- (2) 32" x 66" SINGLE HUNG (1)
- 24" x 36" SINGLE HUNG (1)

VERIFY ACTUAL ROUGH OPENING AND WINDOW SIZES WITH THE MANUFACTURER.

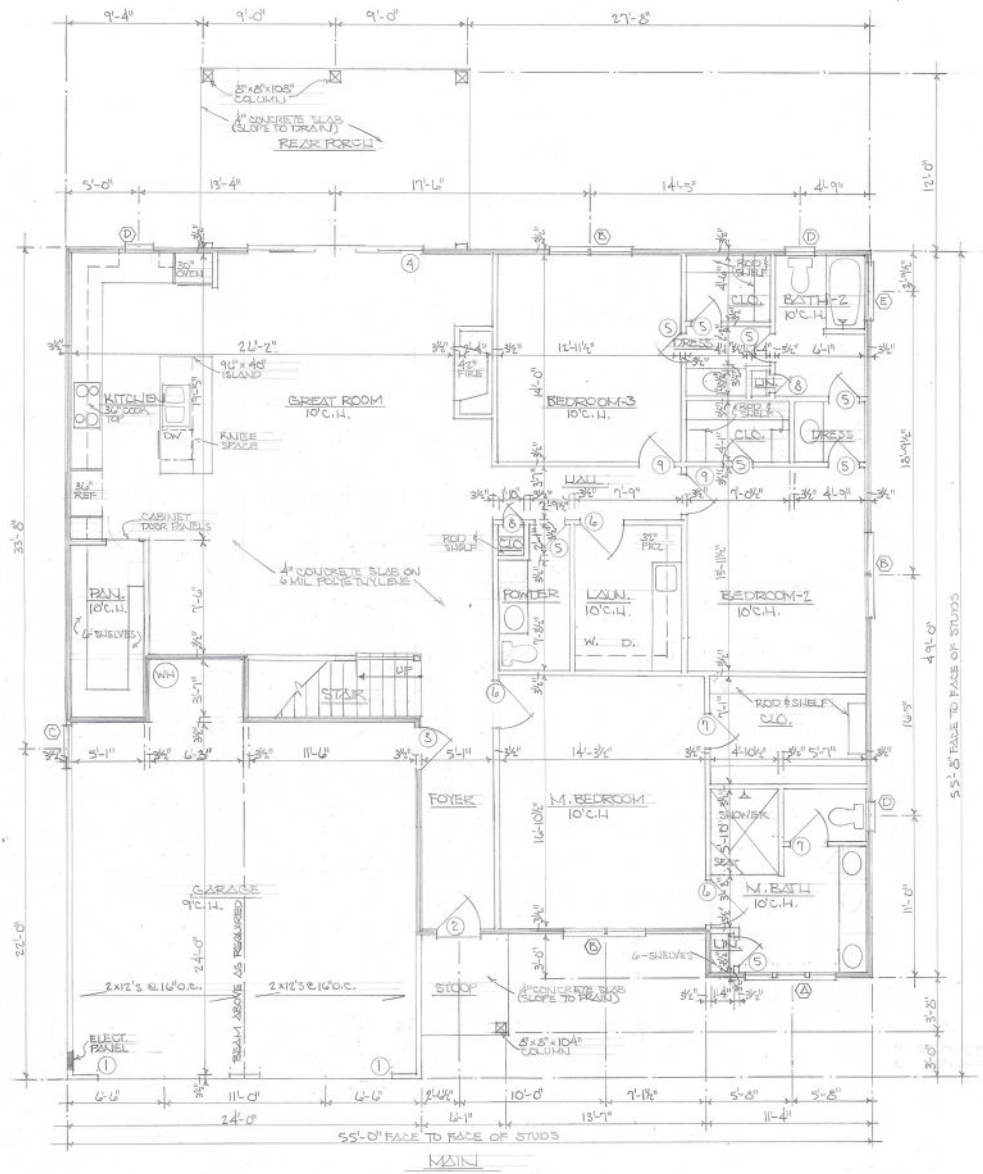
AREA TABULATIONS

HEATED	MAIN FLOOR	2136 SQ. FT.
UPPER FLOOR	407 SQ. FT.	
UNHEATED	GARAGE	574 SQ. FT.
STOOP	40 SQ. FT.	
REAR PORCH	216 SQ. FT.	



FLOOR PLANS

1/4" = 1'-0"



a house plan for
THREE OAKS CONSTRUCTION & DEVELOPMENT
macon, ga.

R.W.B.
11-11-2019

BAILEY B-1