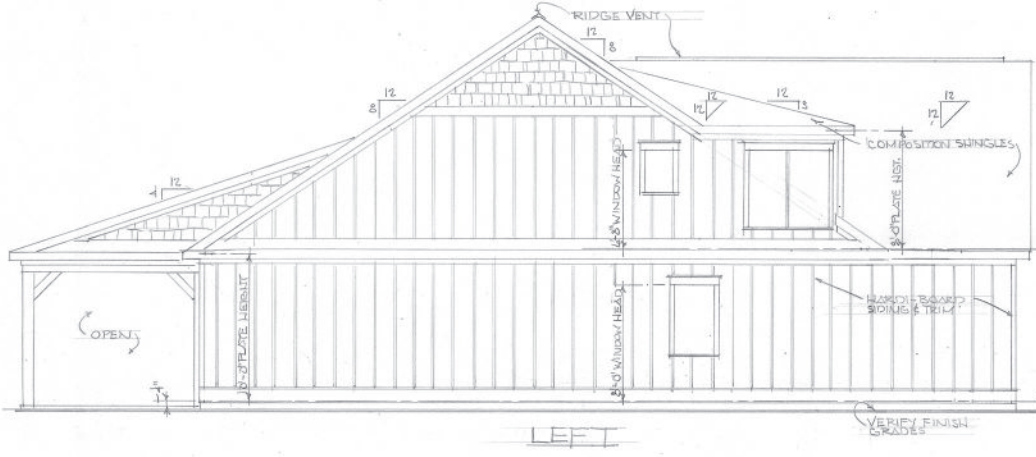


REAR

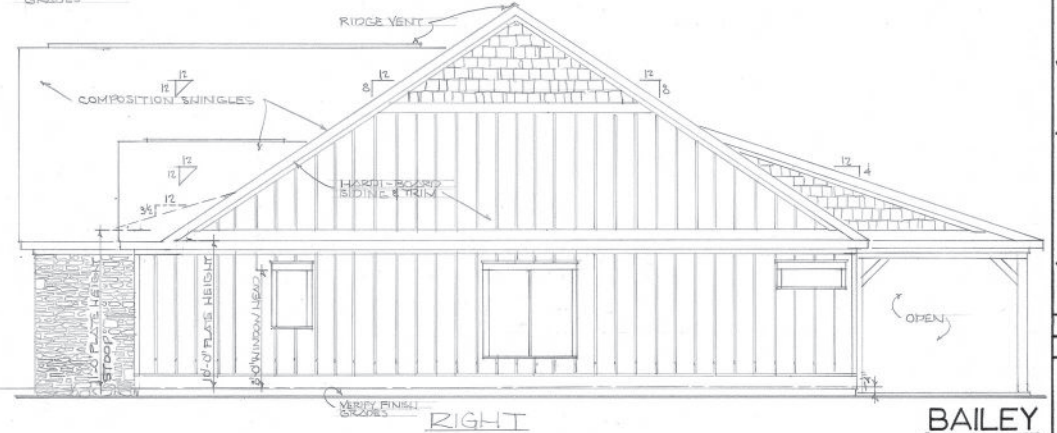
FRONT



LEFT

EXTERIOR ELEVATIONS 1/4"=1'-0"

12" MINIMUM OVERHANG



RIGHT

BAILEY

a house plan for
THREE OAKS CONSTRUCTION & DEVELOPMENT
macon, ga.

R.D.S.
11-11-2017

B-2

NOTES

- CONTRACTOR WILL CHECK AND VERIFY ALL DIMENSIONS AND CONDITIONS BEFORE STARTING CONSTRUCTION.
- CONTRACTOR WILL BE RESPONSIBLE FOR THE PERFORMANCE OF ALL MATERIALS AND EQUIPMENT INSTALLED.
- ALL TRADES WILL CONFORM WITH ALL FEDERAL, STATE, AND LOCAL LAWS, CODES, RULES, AND REGULATIONS.
- CONFIRM WITH OWNER ALL ITEMS NOT SHOWN ON PLANS.
- REMOVE FROM JOB SITE ALL CONSTRUCTION DEBRIS AT COMPLETION OF PROJECT.
- SLOPE FINISH GRADES AWAY FROM STRUCTURE WITH NO PONDING.
- TREAT SOIL IN AND AROUND STRUCTURE FOR TERMITES.
- PROVIDE 3/4" T & C PLYWOOD FLOOR JACKING BOTH FLOORS (GLUED & SCREWED)
- BATT INSULATION: 5" EXTERIOR WALLS
6" BETWEEN MAIN FLOOR JOISTS AND 2x4 WALLS
9" ATTIC SPACES

DOORS

- 6'-0" x 8'-0" OVERHEAD W/ LITES (2)
- 3'-0" x 6'-8" x 1/4" DECORATIVE EXTERIOR W/ 1/2" TRANSLUM (1)
- 3'-0" x 8'-0" x 1/4" EXTERIOR (1)
- 12'-0" x 8'-0" HORIZ. SLIDING EXTERIOR W/ FULL GLASS (1)
- 2'-0" x 8'-0" x 1/4" INTERIOR (6)
- 3'-0" x 3'-0" x 1/4" INTERIOR (6)
- 2'-0" x 3'-0" x 1/4" INTERIOR (2)
- 1'-6" x 8'-0" x 1/4" INTERIOR (2)
- 2'-6" x 8'-0" x 1/4" INTERIOR (2)
- 2'-0" x 6'-0" x 1/4" INTERIOR (2)
- 3'-0" x 6'-8" x 1/4" EXTERIOR (1)

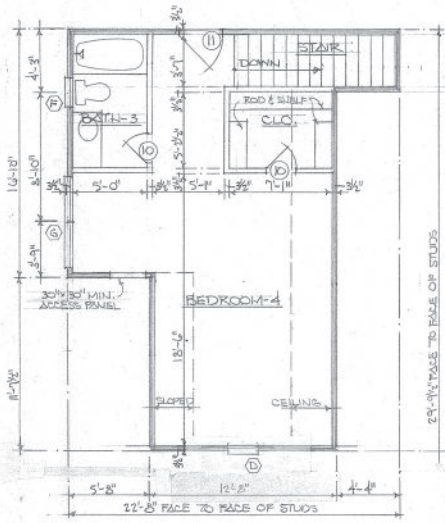
WINDOWS

- 20" x 54" SINGLE HUNG W/ 2" KNOCKOUTS (1)
- 32" x 72" SINGLE HUNG (1)
- 32" x 60" SINGLE HUNG (1)
- 24" x 54" SINGLE HUNG (4)
- 48" x 12" CASEMENT (1)
- 24" x 32" SINGLE HUNG (1)
- 37" x 60" SINGLE HUNG (1)
- 24" x 42" SINGLE HUNG (1) CORNER

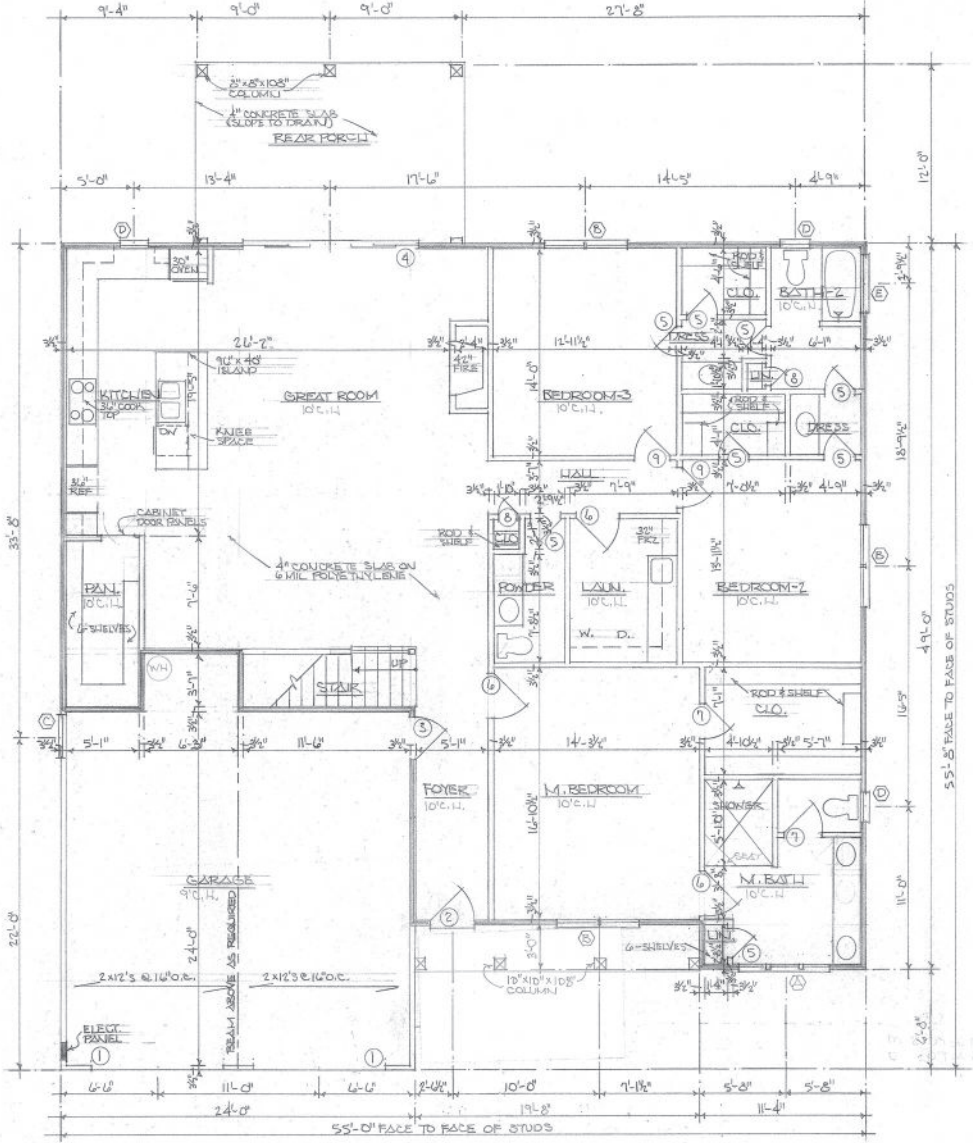
VERIFY ACTUAL ROUGH OPENING AND WINDOW SIZES WITH THE MANUFACTURER.

AREA TABULATIONS

HEATED	MAIN FLOOR	2,186 SQ. FT.
	UPPER FLOOR	401 SQ. FT.
UNHEATED	GARAGE	574 SQ. FT.
	STOOP	58 SQ. FT.
	REAR PORCH	216 SQ. FT.



UPPER



MAIN

FLOOR PLANS

1/4" = 1'-0"

BAILEY

B-2



a house plan for
THREE OAKS CONSTRUCTION & DEVELOPMENT
macon, ga.

R.A.R.
11-11-2019