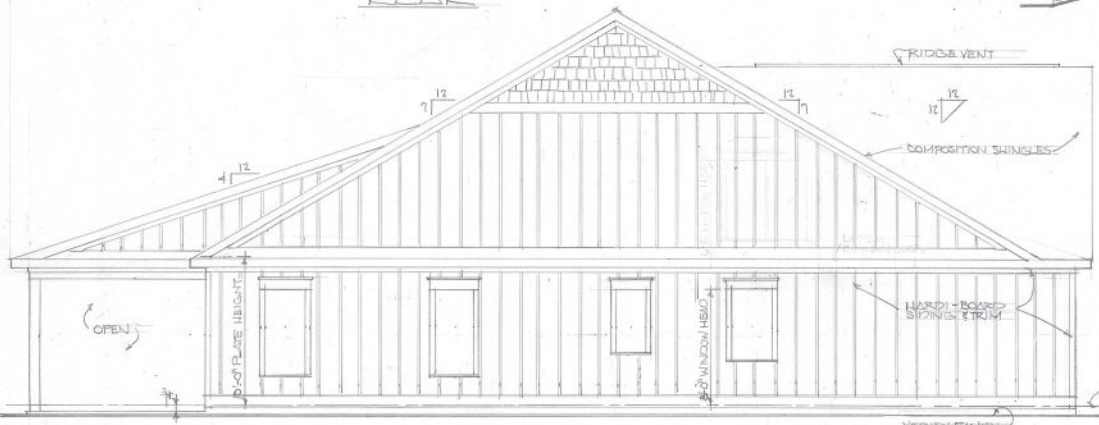


REAR



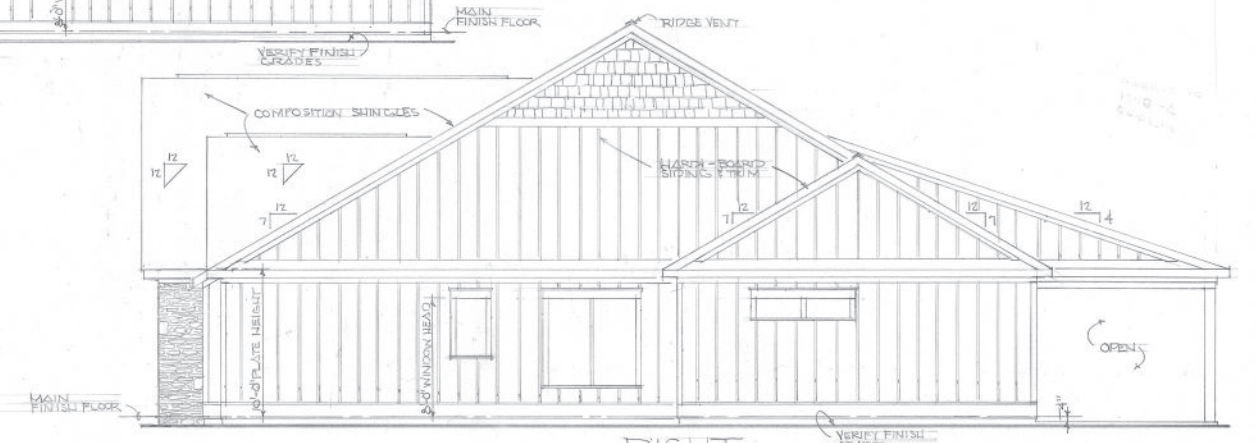
FRONT



LEFT

EXTERIOR ELEVATIONS 1/4"=1'-0"

12" MINIMUM OVERHANG



RIGHT

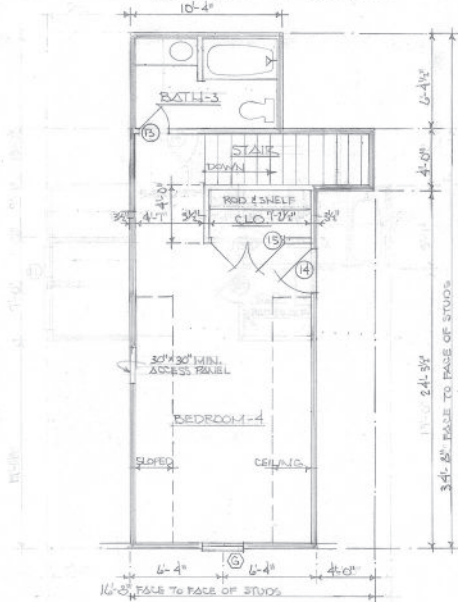
CAROLINA

NOTES

- CONTRACTOR WILL CHECK AND VERIFY ALL DIMENSIONS AND CONDITIONS BEFORE STARTING CONSTRUCTION.
- CONTRACTOR WILL BE RESPONSIBLE FOR THE PERFORMANCE OF ALL MATERIALS AND EQUIPMENT INSTALLED.
- ALL TRADES WILL CONFORM WITH ALL FEDERAL, STATE, AND LOCAL LAWS, CODES, RULES, AND REGULATIONS.
- CONFIRM WITH OWNER ALL ITEMS NOT SHOWN ON PLANS.
- REMOVE FROM JOB SITE ALL CONSTRUCTION DEBRIS AT COMPLETION OF PROJECT.
- SLOPE FINISH GRADES AWAY FROM STRUCTURE WITH NO PONDING.
- TREAT SOIL IN AND AROUND STRUCTURE FOR TERMITES.
- PROVIDE 5/8" x 6" PLYWOOD FLOOR DECKING BOTH FLOORS (GROUDED & SCREWED).
- BATT INSULATION: 3/4" EXTERIOR WALLS
6" BETWEEN MAIN FLOOR JOISTS AND 2X6 WALLS
9" ATTIC SPACES.

AREA TABULATIONS

HEATED	MAIN FLOOR	222.9 SQ. FT.
	UPPER FLOOR	374 SQ. FT.
UNHEATED	GARAGE	613 SQ. FT.
	STOOP	34 SQ. FT.
	REAR PORCH	216 SQ. FT.



UPPER

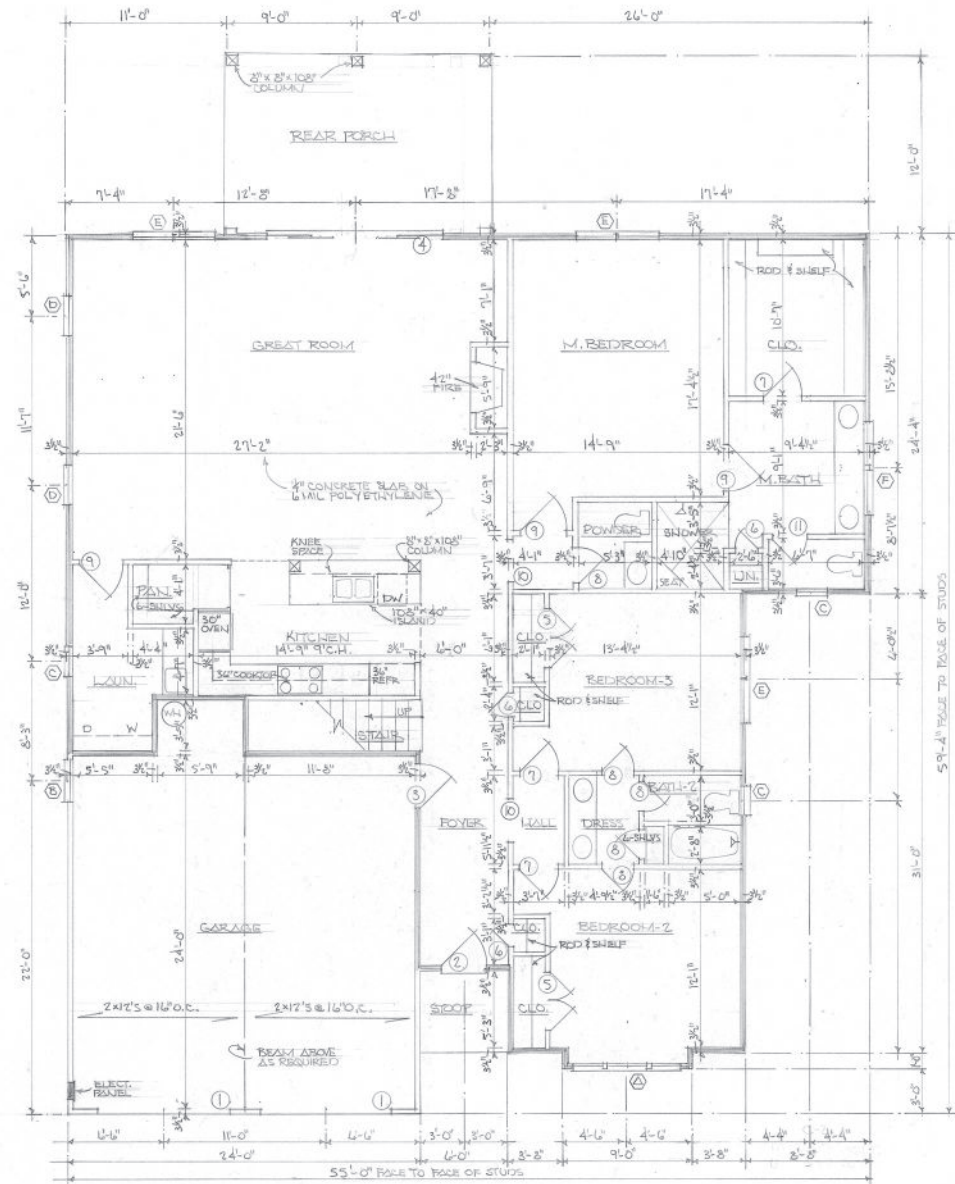
DOORS

- 9'-0" x 2'-0" OVERHEAD W/ LITES (5)
- 3'-0" x 8'-0" DEBRATIVE EXTERIOR (1)
- 3'-0" x 8'-0" 1 1/4" EXTERIOR (1)
- 12'-0" x 2'-0" HORIZ. SLIDING EXTERIOR W/ FULL GLASS (1)
- 2'-0" x 8'-0" 1 1/4" INTERIOR (2)
- 1'-6" x 8'-0" 1 1/4" INTERIOR (5)
- 2'-0" x 8'-0" 1 1/4" INTERIOR (5)
- 2'-0" x 8'-0" 1 1/4" INTERIOR (5)
- 3'-0" x 8'-0" 1 1/4" INTERIOR (5)
- 3'-0" x 8'-0" CASING OPENING (2)
- 2'-4" x 8'-0" 1 1/4" INTERIOR (1)
- OMITTED
- 2'-0" x 4'-8" x 1 1/2" INTERIOR (1)
- 3'-0" x 4'-8" x 1 1/4" EXTERIOR (1)
- 2'-4" x 4'-8" x 1 1/2" INTERIOR (1)

WINDOWS

- (1) 32" x 72" SINGLE HUNG } 4" MOLLION (1)
- (2) 24" x 72" SINGLE HUNG } 4" MOLLION (1)
- 32" x 66" SINGLE HUNG (1)
- 24" x 54" SINGLE HUNG (5)
- 32" x 66" SINGLE HUNG (2)
- (2) 32" x 66" SINGLE HUNG (5)
- (2) 36" x 14" FIXED SASH W/ 4" MOLLION (1)
- 32" x 66" SINGLE HUNG (1)

VERIFY ACTUAL ROUGH OPENING AND WINDOW SIZES WITH THE MANUFACTURER.



MAIN

FLOOR PLANS

1/4" = 1'-0"

CAROLINA



a house plan for
THREE OAKS CONSTRUCTION & DEVELOPMENT
macon, ga.

RAY

11-1-2017

C-1